

ESAL Newsletter May 2023



www.esartleague.org

www.instagram.com/esalofva

May 3 (Wednesday) Wine Wednesday Member

Spotlight Reception, 5-7 PM:

The Members featured in the April 13 to May 31 Show are Carole Campbell, Susan McGuire and William B. Murphy



May 3 (Wednesday) ESYCC May Show Deadline:

You may enter up to 3 items in the ESYCC May Show. Please email Carol Barylski with the painting's title, medium, artist, size, price and contact number: brylfam@gmail.com



May 5 (Friday) ESYCC Drop Off 10-11/ Pick up curated work from 2-4 PM:

May 17 (Wed) Member Meeting Featuring



Phillip Spohn "How to Photograph your work", 6-8 PM:

Photography has been his calling since he was a teen and first picked up a camera and said, "This could be fun..."
"All sorts of photographs..."
"All sorts of experiences..."

May 26 (Friday) Paint-out: Rose Cottage, Melfa

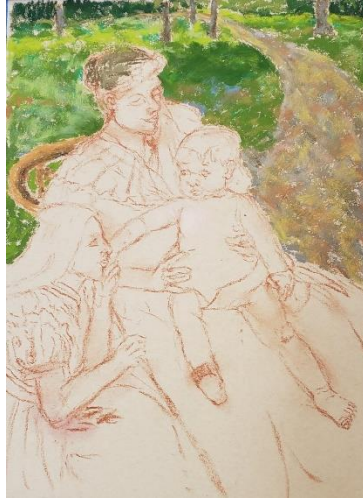
This exciting paint-out will be at the Rose Cottage, a Land Trust Property, in Melfa. Just bring your paints, a chair, a bag lunch and water. For further information email: paintouts@esartleague.org



April Paint-out at the Chrysler Museum, Norfolk

Inspiration with the work of the Masters and they all look great!





NEW EVENT!

Blooms & Brushes Garden & Studio Tour, 11-3 Saturday June 3 (Rain date June 4):

- **Five Gardens within walking distance of HOS**
- **Plein Air Artists at Gardens**
- **Garden Club Florals displayed and sold in the HOS Gallery**
- **Scavenger Hunts and Prizes**
- **Food Trucks outside HOS**
- **Reception at HOS at 3 PM , with refreshments**

To sign up and for information, email Joani Donohoe:
collegeavenue6@outlook.com

June 3 (Saturday) Room 104, HOS, 11-3 PM

ESAL Artists are invited to set up and sell their work in Room 104 in conjunction with the Blooms & Brushes Event! **There are SIX spaces available...(4 tables and floor space to set up display boards)**. If you have a "V" rack for unframed work you may bring that. Members must be present to set up their own work and handle sales. ESAL will receive a 15% commission on any items sold. A log will be available to record your sales. **First 6 emails received by Carol: brylfam@gmail.com will hold your place!** Please email your name and choice of table or display boards.